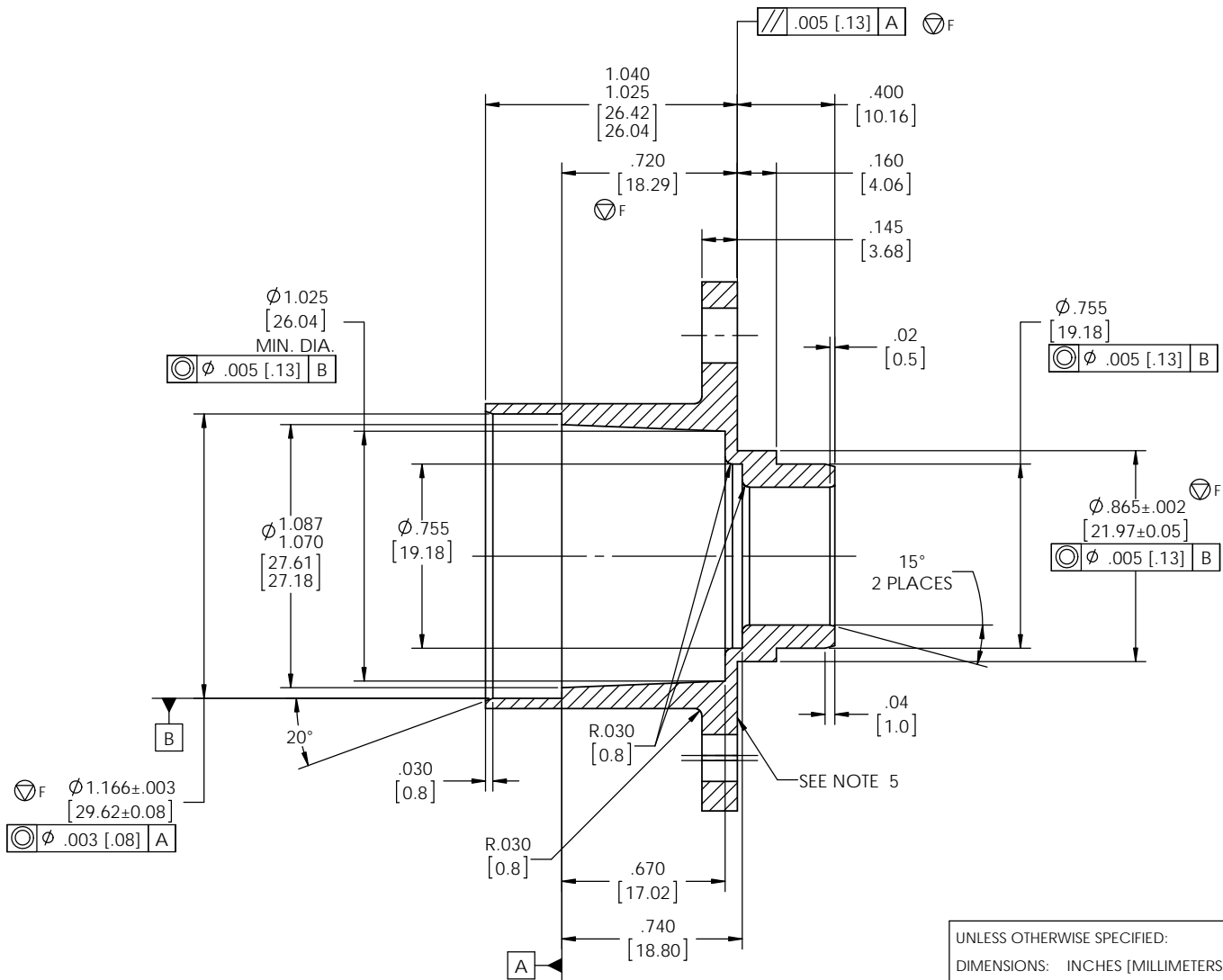
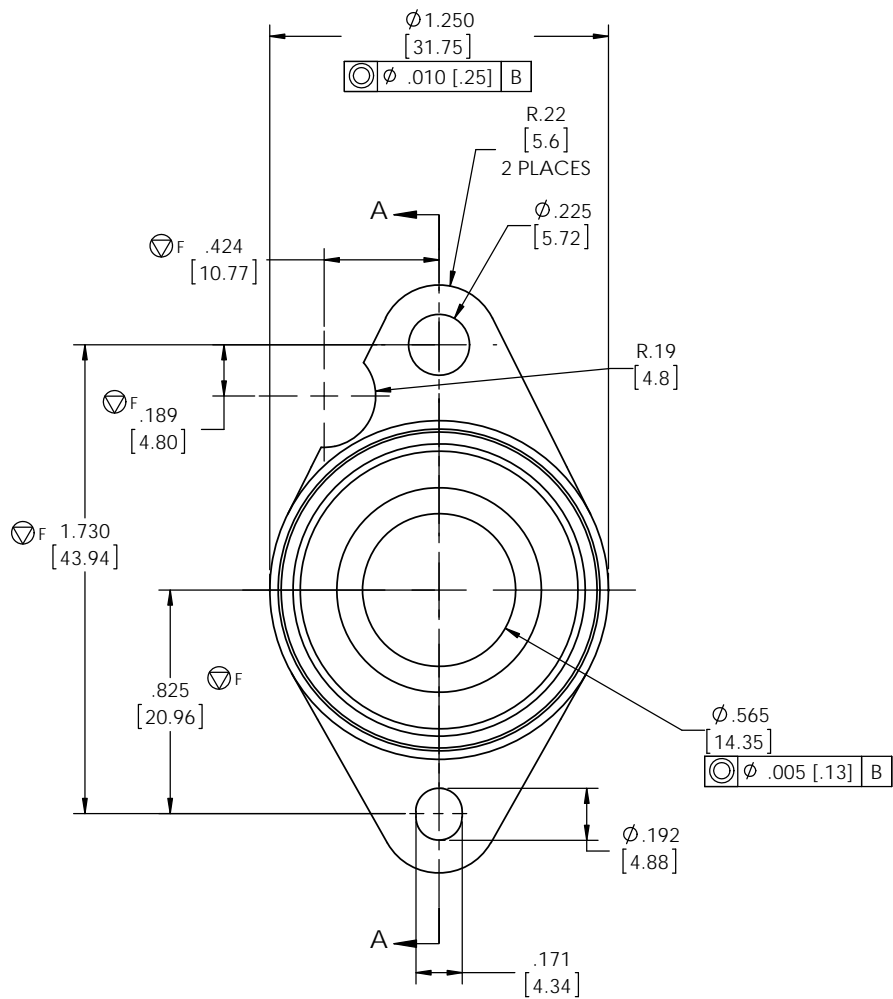


DRAWING NO.:  
24-397



ISO - VIEW  
SCALE 1:1



NOTES:


- MATERIAL: ZINC ALLOY AC41A, MATERIAL CERTIFICATION REQUIRED. SEE CHART FOR MATERIAL COMPOSITION.
- FINISH: SEE CHART, MUST BE UNIFORM IN COLOR. MUST HAVE NO BASE METAL CORROSION AFTER 24 HOUR SALT SPRAY.
- UNLESS OTHERWISE SPECIFIED ALL FILLETS & RADII TO BE .010 [.25] R. MAX.
- REMOVE CASTING BURRS, CHIPS AND SHARP EDGES. PER NADCA G-6-5-94 COMMERCIALY TRIMMED CASTING.
- CAVITY IDENTIFICATION, INSET .010-.020 [.25-.51] ON THIS SURFACE. USE LETTER STARTING WITH "A".
- WITH 20 PSIG OF AIR SUPPLIED TO THE DIAMETER AT DATUM -B- AND THE .565 [14.35] DIAMETER PLUGGED, SUBMERGE THE PART UNDER WATER FOR A MIN. OF 15 SECONDS, THERE SHOULD BE ZERO AIR BUBBLES.

CHEMICAL COMPOSITION (%)								
MATL.	Al	Cu	Mg	Fe	Pb	Cd	Sn	Zn
AC41A	3.5/4.3	.75/1.25	.03/.08	.1(MAX)	.005 (MAX)	.004 (MAX)	.003 (MAX)	REM

②	24-397C	CLEAR CHROMATE (TRIVALENT PROCESS)
①	24-397B	E COAT - BLACK EPOXY
	PART #	PLATING

TOLERANCES UNLESS OTHERWISE SPECIFIED  
.X ± .030 [.25]  
.XX ± .010 [.13]  
.XXX ± .005

SYMBOL	SPECIAL CHARACTERISTIC DESCRIPTION
ⓕ F	FIT AND FUNCTION
⟨ST⟩	STATISTICAL PROCESS CONTROL (SPC)
ⓕ S	SAFETY OR REGULATORY

UNLESS OTHERWISE SPECIFIED: DIMENSIONS: INCHES [MILLIMETERS] GENERAL TOLERANCES: LINEAR ± SEE BLOCK ANGULAR ± 1° SURFACE ROUGHNESS: 64 ✓ REMOVE SHARP EDGES: MAX .005 ALL DIAMETERS: ⓕ .010 ⓕ		● <b>STANDARD MOTOR PRODUCTS, INC.</b> 2007-2016 ALL RIGHTS RESERVED, CONFIDENTIAL AND PROPRIETARY.	
		SUPERSEDES: BLD 24-397 Rev A	
		SIMILAR TO: -----	
		REF DWG NO.: -----	
MATERIAL: SEE NOTES	FORM: -----	DRAWN: B. CASTRO	DATE: 11 JUL 13
MATERIAL SPECIFICATION: SEE CHART		CHECKED: M. HERRICK	DATE: 12 JUL 13
HEAT TREATMENT: -----		APPROVED: -----	DATE: -----
FINISH: SEE CHART		RELEASE STATUS: -----	
DRAWING, DIMENSIONING AND TOLERANCING IN ACCORDANCE WITH SMP, INC. UPS-019.		 <b>STANDARD MOTOR PRODUCTS, INC.</b> GREENVILLE OPERATIONS 5150 PELHAM ROAD GREENVILLE, SC 29615 USA	
SCALE: 3:1	PROJECTION: ⓕ		
PRODUCT ENGINEERING <b>SOLIDWORKS GENERATED</b> DRAWING		TITLE: <b>HOUSING GM / CHRYSLER IAC</b>	
FORMAT: A1	ISSUE DATE: 23 MAR 16	ISSUE: 2	SHEET: 1/1
		DRAWING NO.: 24-397	