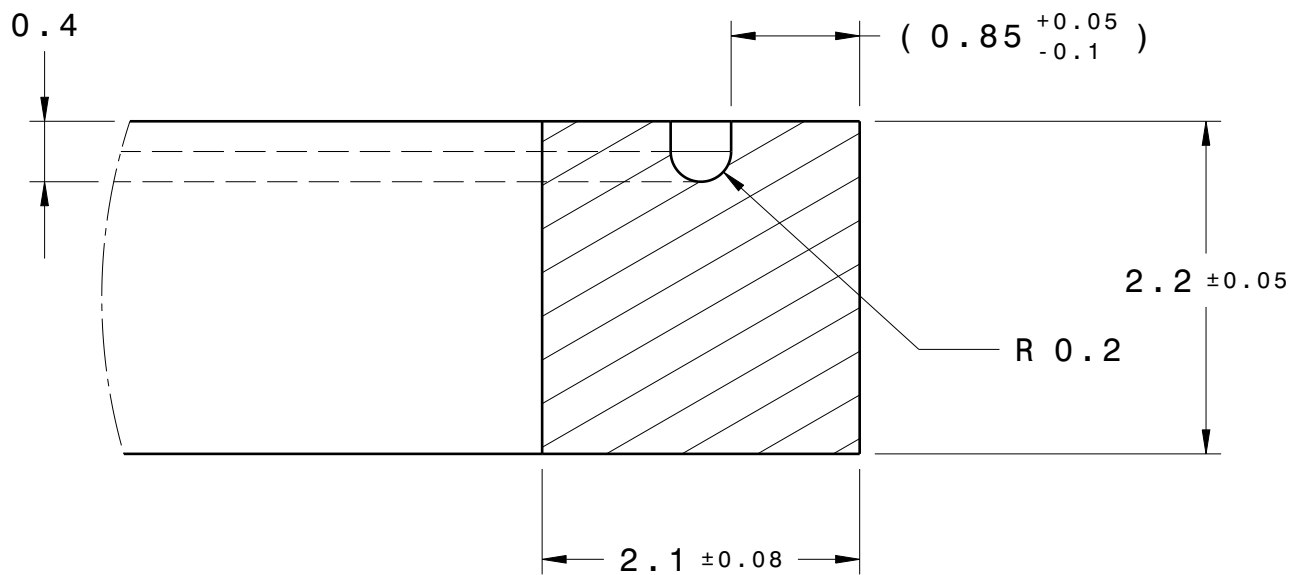
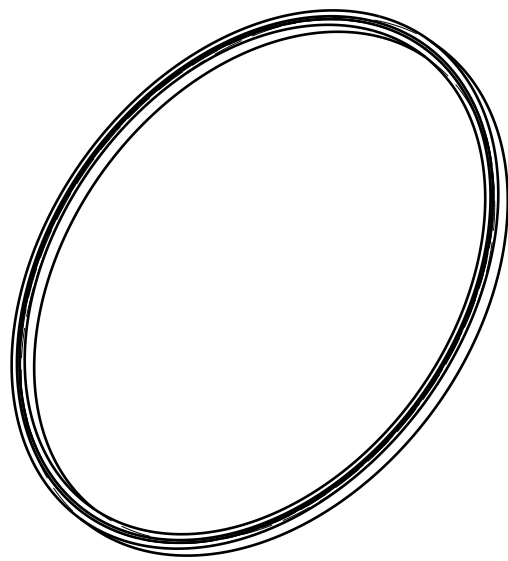
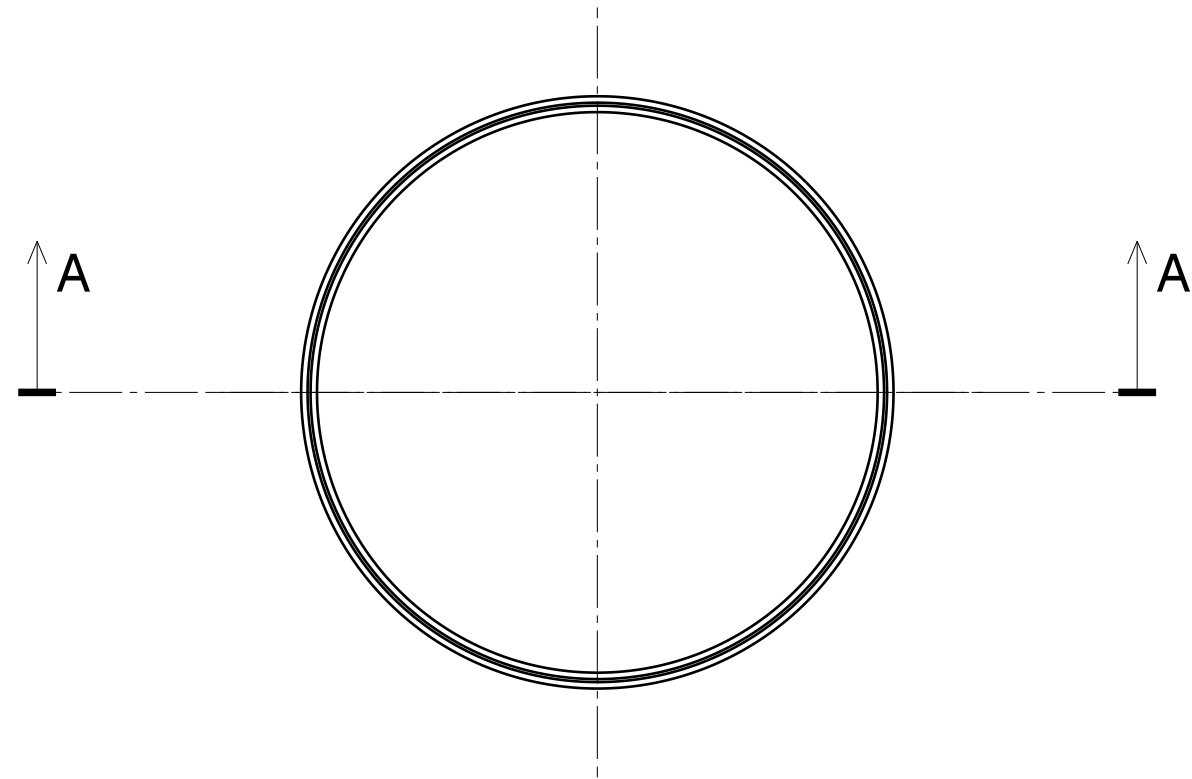
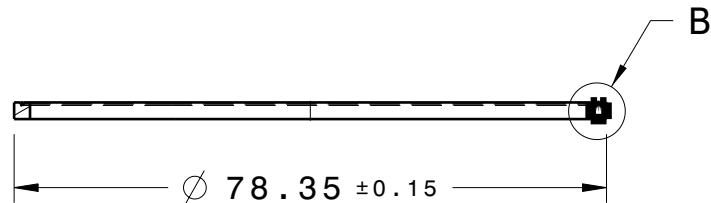


LTRS	REVISIONS			
CN NUMBER	DATE	ORIGINATOR	REVIEWER	CN APPROVER
PART NUMBER CG673CRW1A-01-00 REPLACES PART NUMBER CG673F5D1A-01-02				
FIRST RELEASED CG673CRW1A-01				
NPL1901808	20190510	MKOC	BGUSTAV	MFRIEDL



DETAIL B  
SCALE: 20:1



SECTION A

MATERIAL: POLYTETRAFLUOROETHYLENE (PTFE)

ALL MATERIALS MUST BE COMPATABLE WITH R134a AND R1234YF REFRIGERANTS

ALL MATERIALS MUST BE COMPATABLE WITH POLYALKYLENE GLYCOL (PAG) AND POLYOL ESTER (POE) COMPRESSOR OILS

FOR CURRENT RELEASE STATUS SEE THE HANON SYSTEMS ENGINEERING NOTICE

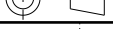
CHANGES AFFECTING DESIGN, COMPOSITION OR PROCESSING OF THE PART PREVIOUSLY APPROVED FOR PRODUCTION REQUIRE PRIOR APPROVAL FROM HANON SYSTEMS PRODUCT ENGINEERING.

FOR THE PURPOSES OF GEOMETRIC TOLERANCING ALL DIMENSIONAL INFORMATION CONTAINED IN THE CAD MODEL IS BASIC

ENGINEERING APPROVAL OF PRODUCTION SAMPLES FROM EACH SUPPLIER IS REQUIRED PRIOR TO AUTHORIZATION OF INITIAL PRODUCTION

FOR FURTHER CHARACTERISTICS REFER TO SCIF DOCUMENT (HF-105a)

DRAWING INFORMATION	1. THIS DRAWING AND ANY INTELLECTUAL PROPERTY RIGHTS THEREIN ARE PROPERTY OF HANON AND NO LICENSES ARE GRANTED UNDER THOSE RIGHTS.	4. MASS PRODUCTION MAKER SHOULD BE THE SAME TO PROTOTYPE MAKER. MASS PRODUCTION MAKER CAN BE CHANGED UNDER THE APPROVAL OF R&D CENTER AND QUALITY ASSURANCE TEAM.	6. DRAFTED IN ACCORDANCE WITH HANON ENGINEERING CAD STANDARD LAST REVISION.
	2. THIS DRAWING OR TECHNICAL INFORMATION IS IMMEDIATELY RETURNED AFTER USING WHEN HANON REQUESTS.	5. A SUPPLIER SHOULD NOT BE CHANGING ANY DESIGN WITHOUT AN UPDATED, APPROVED DRAWING FROM HANON.	7. MUST COMPLY WITH GADSL, HANON SYSTEMS AND APPLICABLE OEM RESTRICTED SUBSTANCE MANAGEMENT STANDARDS.
	3. THE ITEM PRODUCED IN ACCORDANCE WITH THIS DRAWING SHOULD NOT BE USED OR SUPPLIED WITHOUT HANON'S APPROVAL.	ANY CHANGES THAT THEY WANT TO IMPLEMENT SHOULD BE DISCUSSED AND AGREED TO BEFORE ANY PARTS ARE PRODUCED.	8. THE TOOLING SUPPLIER SHOULD SUBMIT THE BELOW DOCUMENTS TO HANON PD ENGINEERS WITHIN 5 DAYS AFTER RECEIVING DRAWING. 1) TOOLING(DRAWING) REVIEW REPORT 2) TOOLING DEVELOPMENT PLAN 3) DESIGN CHANGE PROPOSAL (IF REQUIRED)

ORIGINATOR		DATE		CUSTOMER PART NUMBER		CUSTOMER-VEHICLE NAME	
MKOC		20190502				HANON SYSTEMS-GENERIC	
REVIEWER		DATE		OLD PART NUMBER			
BGUSTAV		20190509		DESCRIPTION			
CN APPROVER		DATE					
MFRIEDL		20190509		PART NAME			
3rd ANGLE PROJ		CAD TYPE		SEAL-BACKPRESSURE			
		CATIA V5 R24		PHASE		PART NUMBER	
SCALE		1:1		UNITS		mm	
SHEET		1/1		WEIGHT			
DIMC IS MASTER		DWG SIZE		A2			
				