

4

3

2

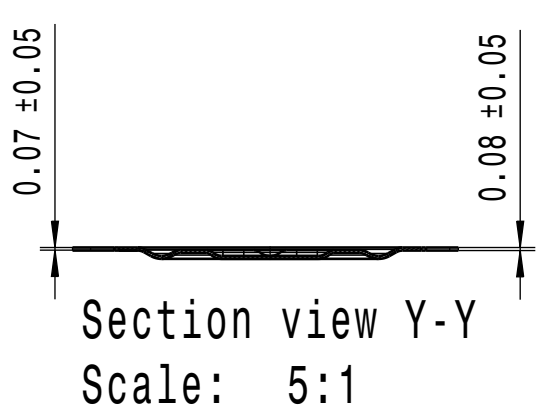
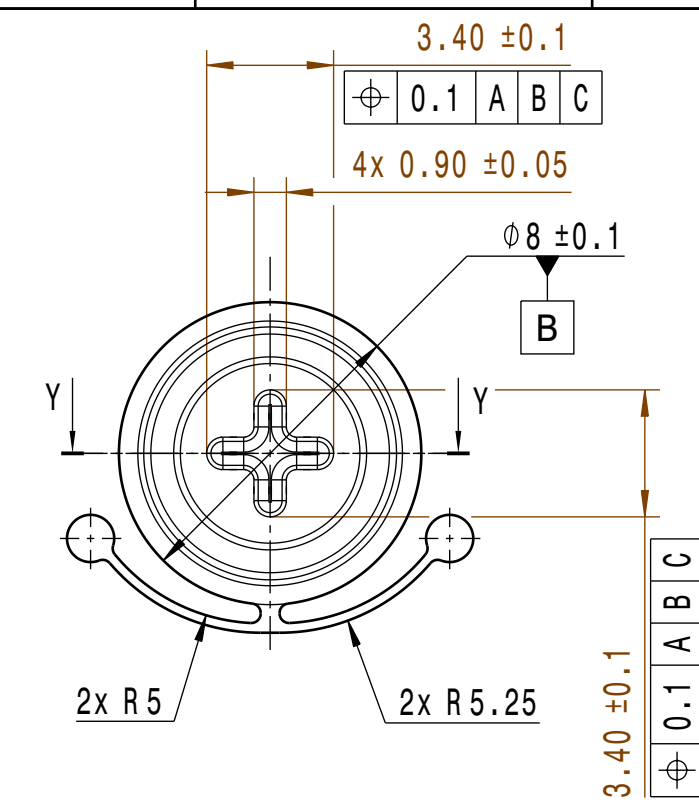
1

4

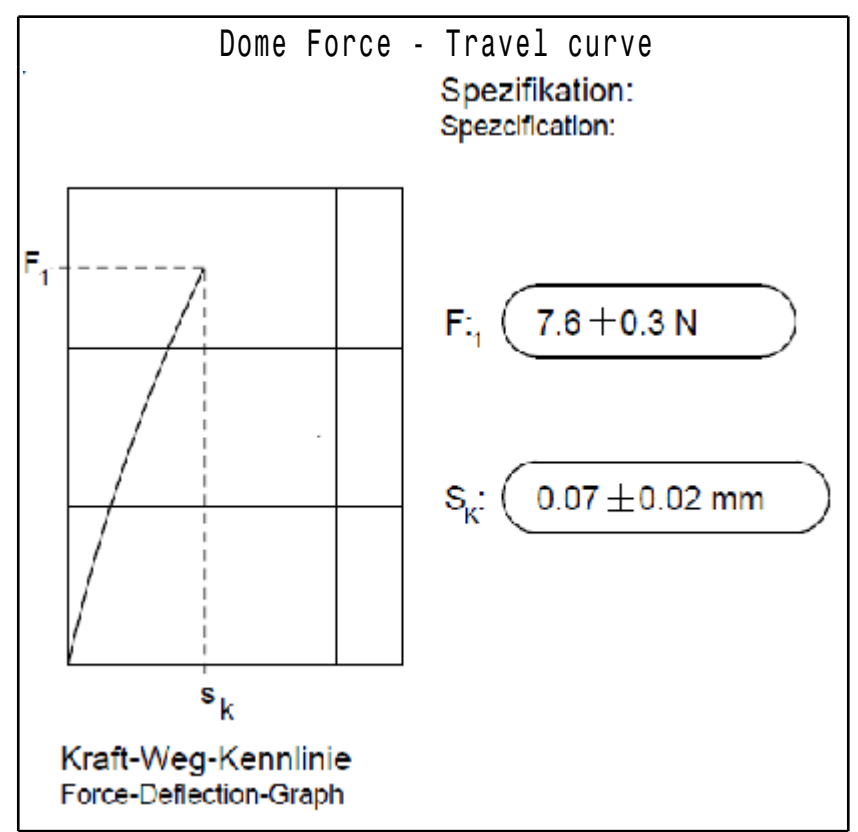
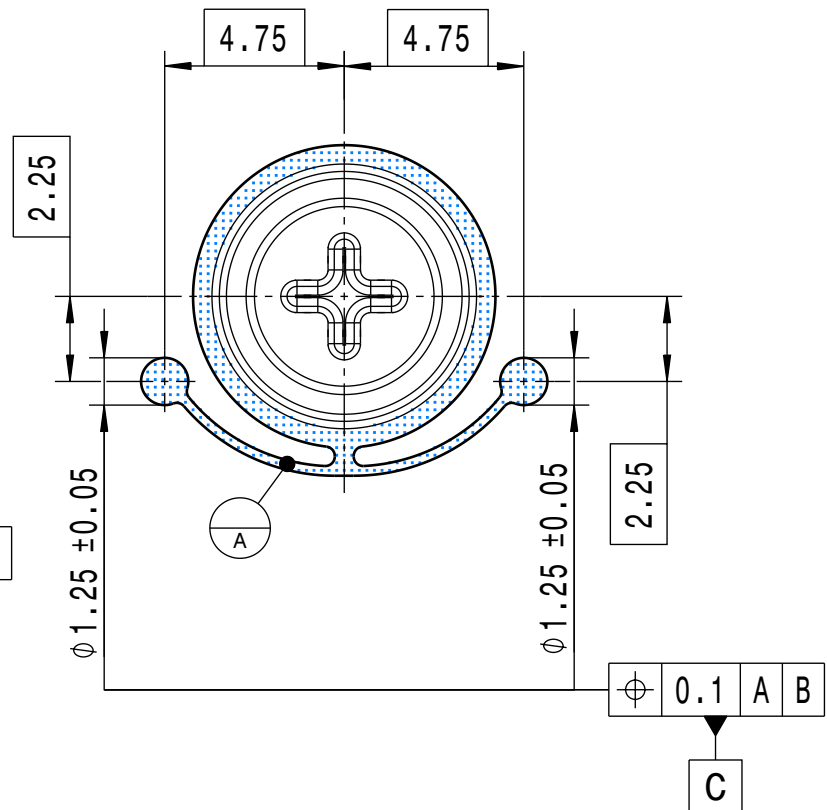
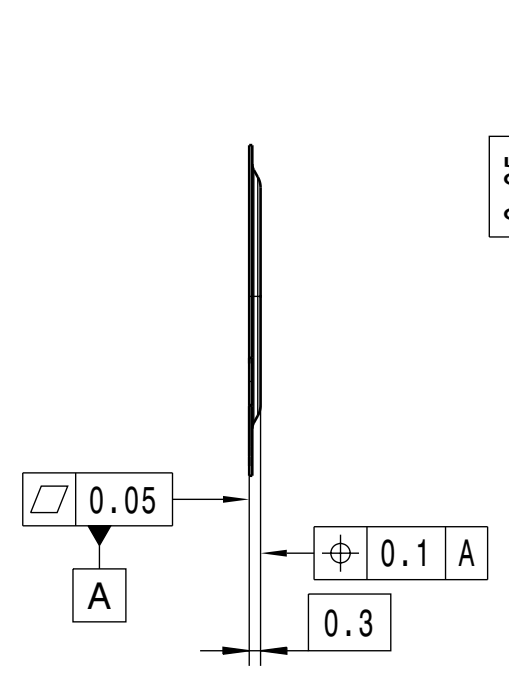
3


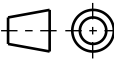
2

1



Service temperature : -40°C to 100°C  
Contact resistance : lower than 1  $\Omega$   
The open contact resistance must be permanently greater than 20 K  $\Omega$   
Switch should stand 800,000 cycles  
Soft sound, no click, no sharp sound will be accepted  
Part to be soldered on the PCBa (reflow process)  
Thickness : 0.08 mm  $\pm 0.005$  mm  
Tactile measure to be done after reflow process  
Soldering areas cleaned without impurety : surface tension 36 mN/m min.  
Metal dome will be used on PCB ENIG



SEMI FINISHED/ STOCK MATERIAL			
MATERIAL COLOR			
PROJECT			
CUSTOMER			
CUST. PRT. NO.			
CUST. DRW. NO.			
CUST. MOD. NO.			
CUST. MOD. DATE			
GENERAL TOLERANCE			
MATERIAL			APPROVED BY
TREATMENT COATING			APPROVED DATE
TITLE & DESCRIPTION			ESTIMATED MASS
Force sensor			CREATED BY
			yudong.zhang
			CREATION DATE
			2021/08/13
 INTERIOR CONTROLS CHINA North Junyi Ind. Park, Huaide Vil. Fuyong Town, Baoan Dist., 518128 SHENZHEN	DRAWING NUMBER		DRAWING REV.
	DRW_E853767_001		A
	PART NUMBER	E853767	
SCALE		 First Angle Std	
1 : 1			
SIZE		SHEET	
A3		1 / 1	
The CATIA V5 Digitized drawing(s) and 3D model(s) are the only official record(s). Only released, approved, and obsoleted revisions of this drawing and 3D model in the Valeo library are considered official references.			