

AUTHORITY SHEET-TRN-UZ	ENGINEERING A. RAMESH	RELEASE DATE 01/2021
SEE THE PIP FOR ISO 15774-1:2015 THIS IS A WORK IN PROGRESS DO NOT USE FOR PRODUCTION ON THIS DRAWING ANALYZE THE NEW MODEL	ISO 15774-1:2015 THIS IS A WORK IN PROGRESS DO NOT USE FOR PRODUCTION ON THIS DRAWING ANALYZE THE NEW MODEL	UNLESS OTHERWISE SPECIFIED DIMENSIONS ARE IN MM TOLERANCES: LINEAR: ±0.15 ANGULAR: ±0.5° HOLE POSITION: ±0.15 HOLE DIRECTION: ±0.15
THIRD ANGLE PROJECTION SPECIFIED BY VIEW IN DIRECTION OF ARROW	THIRD ANGLE PROJECTION SPECIFIED BY VIEW IN DIRECTION OF ARROW	SCALE 1:1
SUPPORT - OUTPUT GEAR MACHINED COMPLETE		REF. PART NUMBER 04752653AB

SHEET A OF B

948TE

(NX)

R36 948 948

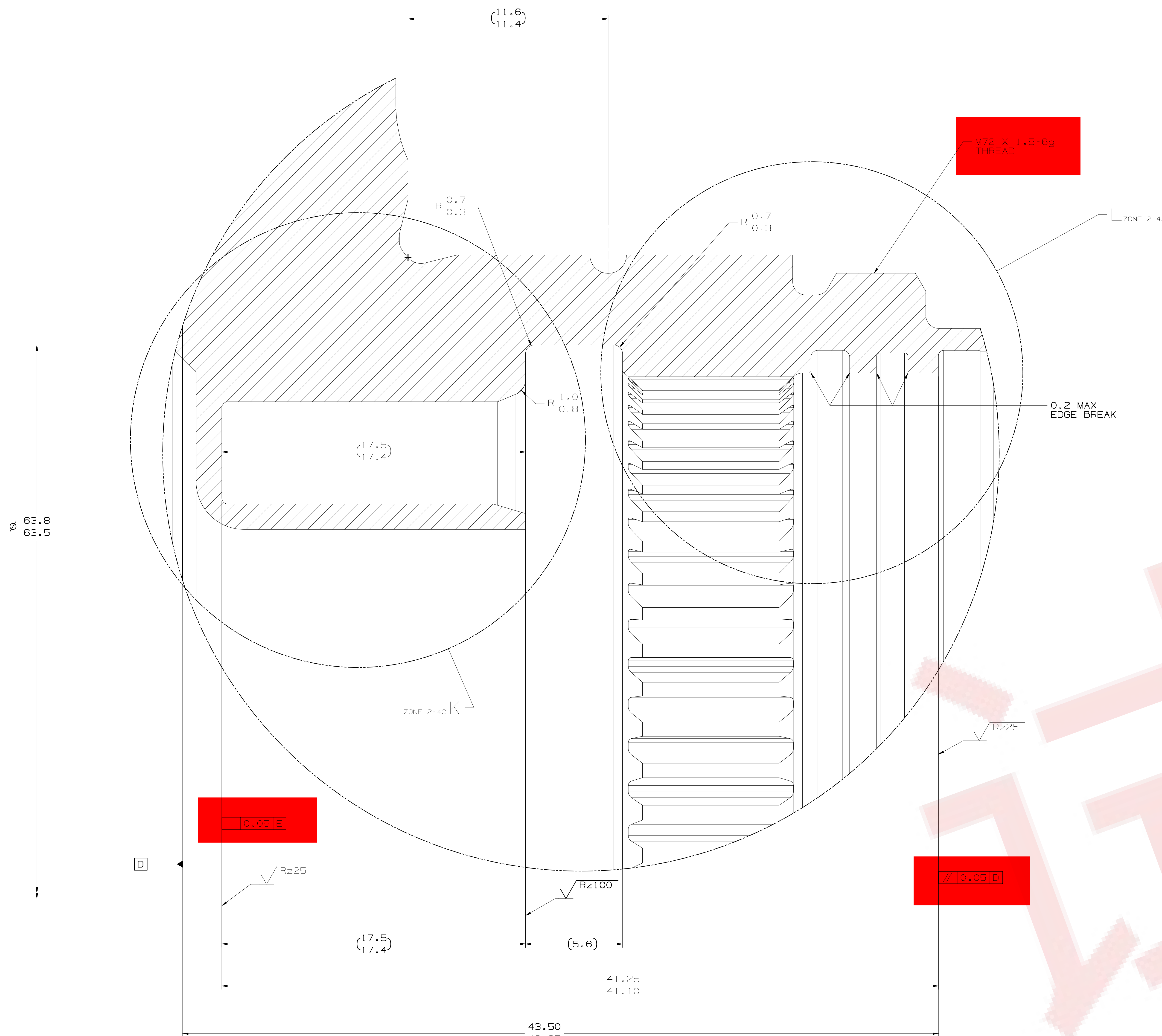


D

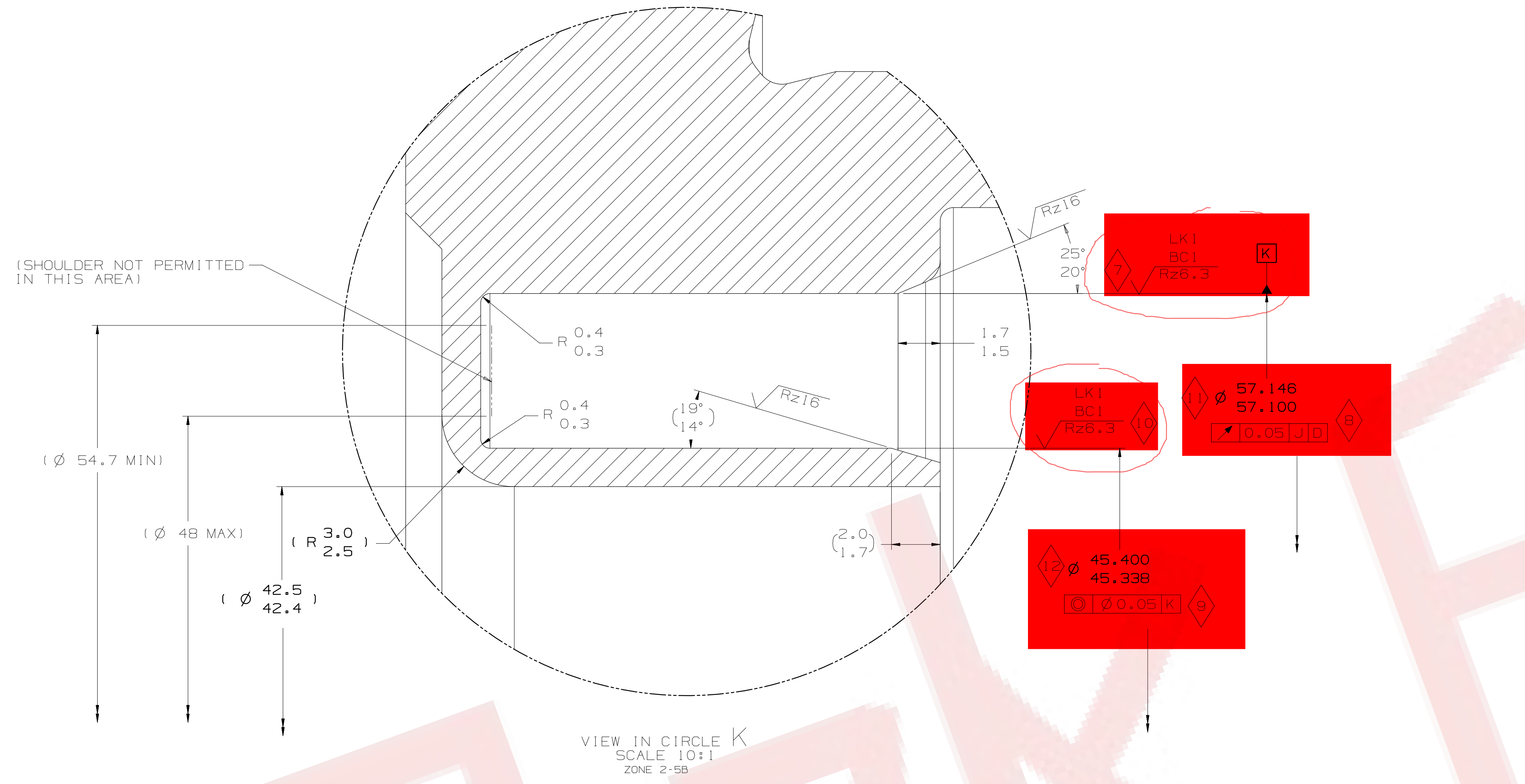
C

B

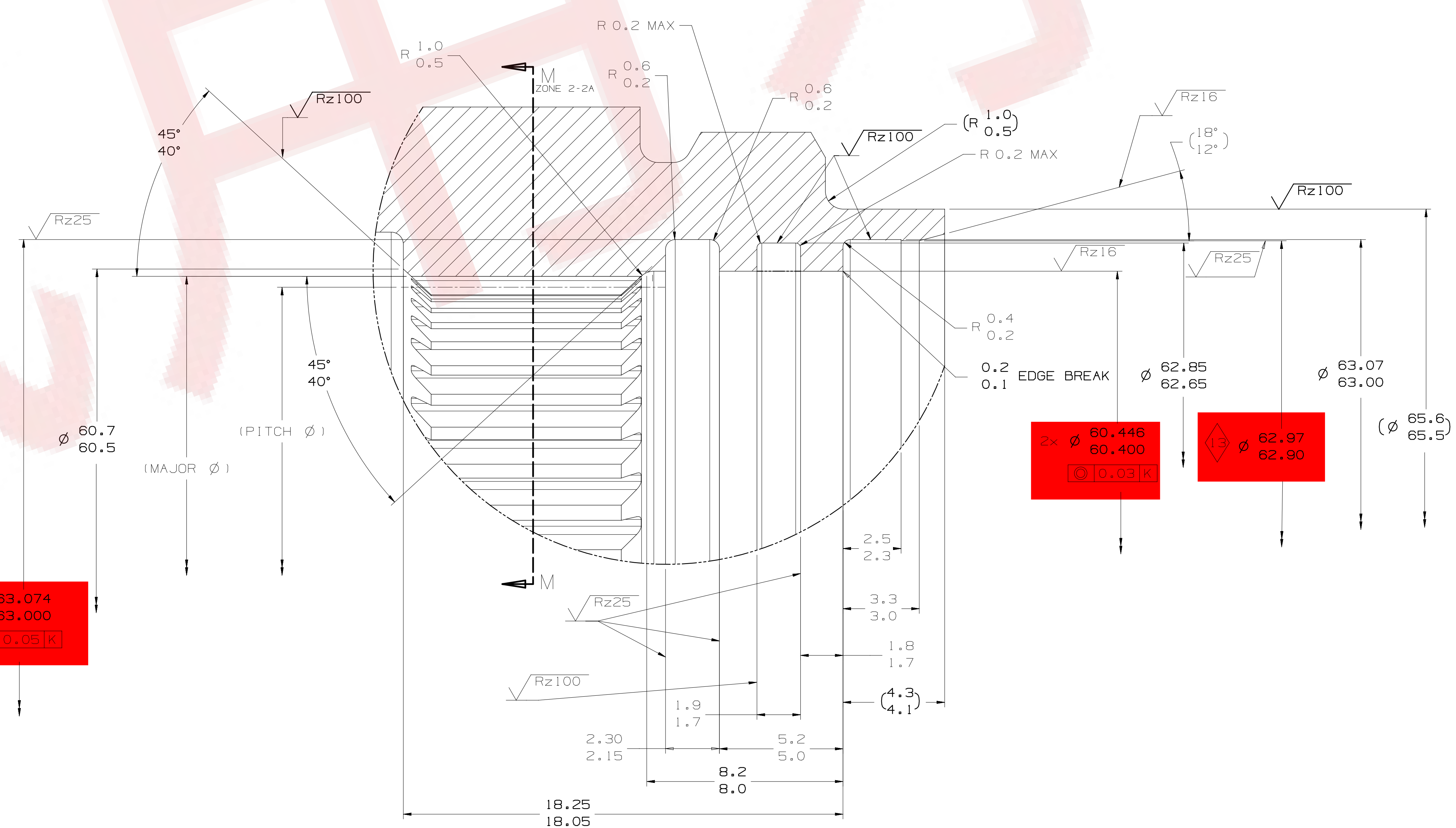
A



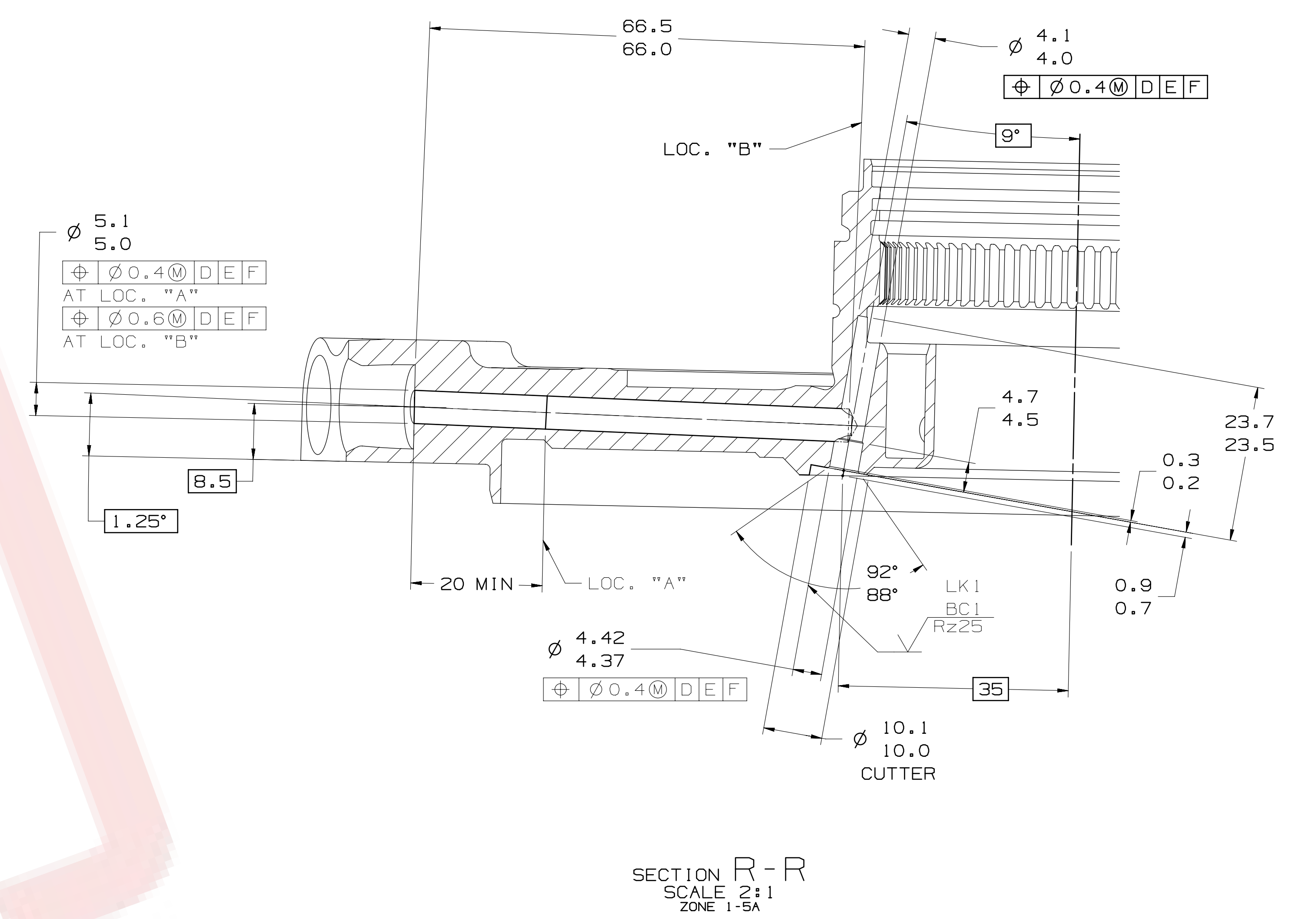
VIEW IN CIRCLE J  
SCALE 10:1  
ZONE 1-3C



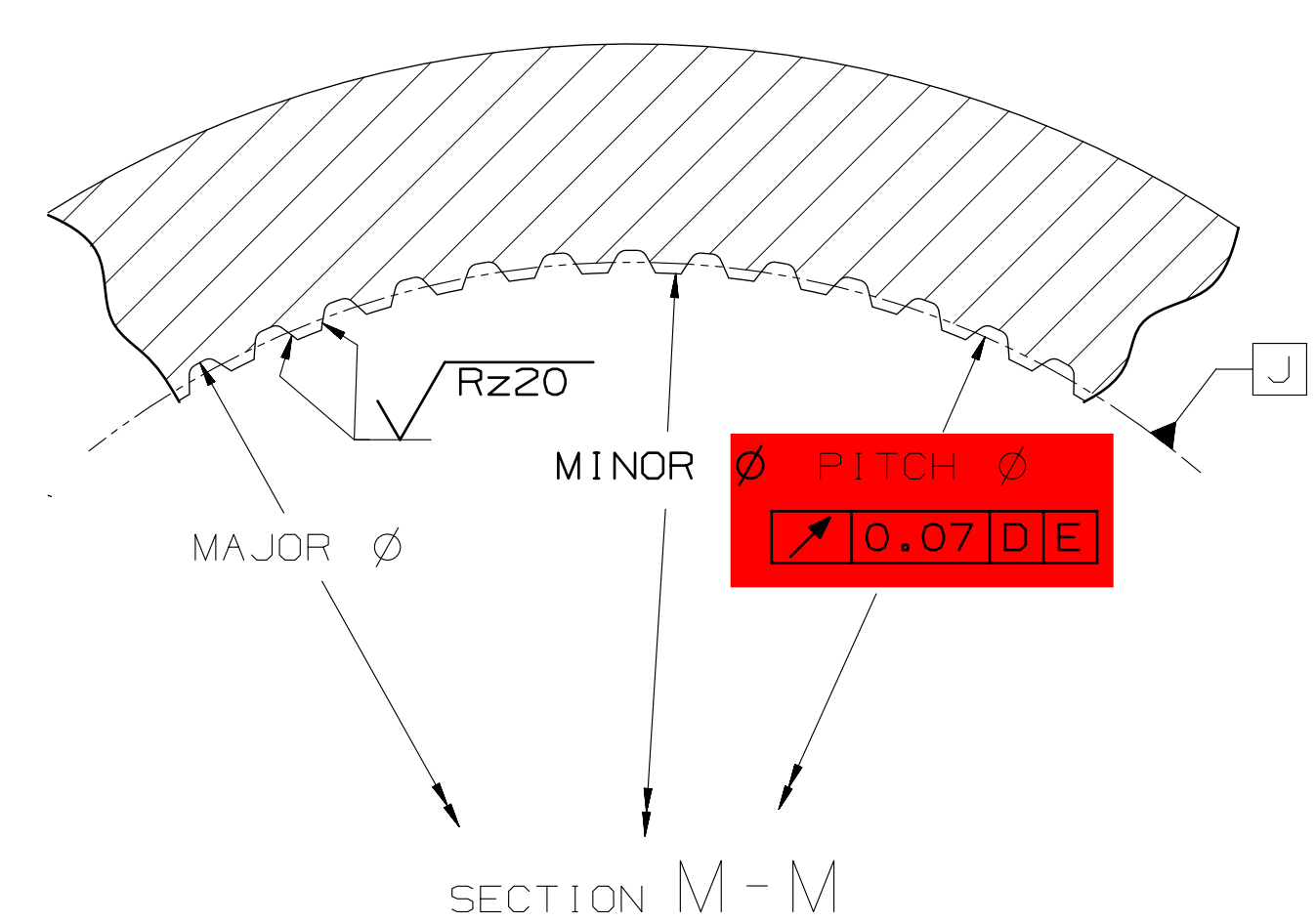
VIEW IN CIRCLE K  
SCALE 10:1  
ZONE 2-5B



VIEW IN CIRCLE L  
SCALE 10:1  
ZONE 2-5C



SECTION R-R  
SCALE 2:1  
ZONE 1-5A



SECTION M-M  
SCALE 4:1  
ZONE 2-4B

INTERNAL INVOLUTE SPLINE DATA

NUMBER OF TEETH	74
MODULE	0.80
PRESSURE ANGLE	30°
BASE DIAMETER	51.269
PITCH DIAMETER	59.200
MAJOR DIAMETER	60.00/60.28
FORM DIAMETER	59.910
MINOR DIAMETER	58.40/58.59
CIRCULAR SPACE WIDTH	1.236
MAX ACTUAL	XX
MIN ACTUAL	1.210
MEASUREMENT BETWEEN GAGE PINS	58.821/58.902
GAGE PIN DIAMETER	1.50
FLAT PIN DIMENSION	XX
FILLET RADIUS	XX
PROFILE VARIATION	XX
TOTAL INDEX VARIATION	XX
MAX LEAD VARIATION	XX
SPLINE CLASS	XX

AUTHORITY	ENGINEERING	RELEASE DATE	01/20/2018
DESIGNER	TRN-UZ	APPROVER	A. RAMESH
DATE	2018	001	A
SCALE	1:1	SCALE	1:1
TITLE	SUPPORT - OUTPUT GEAR MACHINED COMPLETE	REF PART NUMBER	04752653AB

SHEET B OF B

948TE

(NX)

R36 948 948