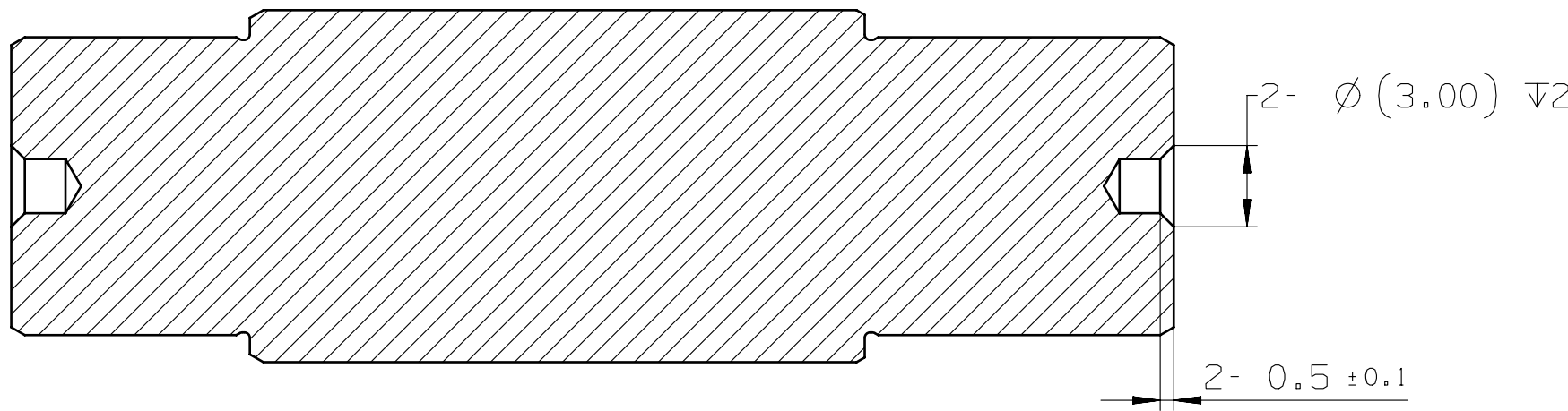
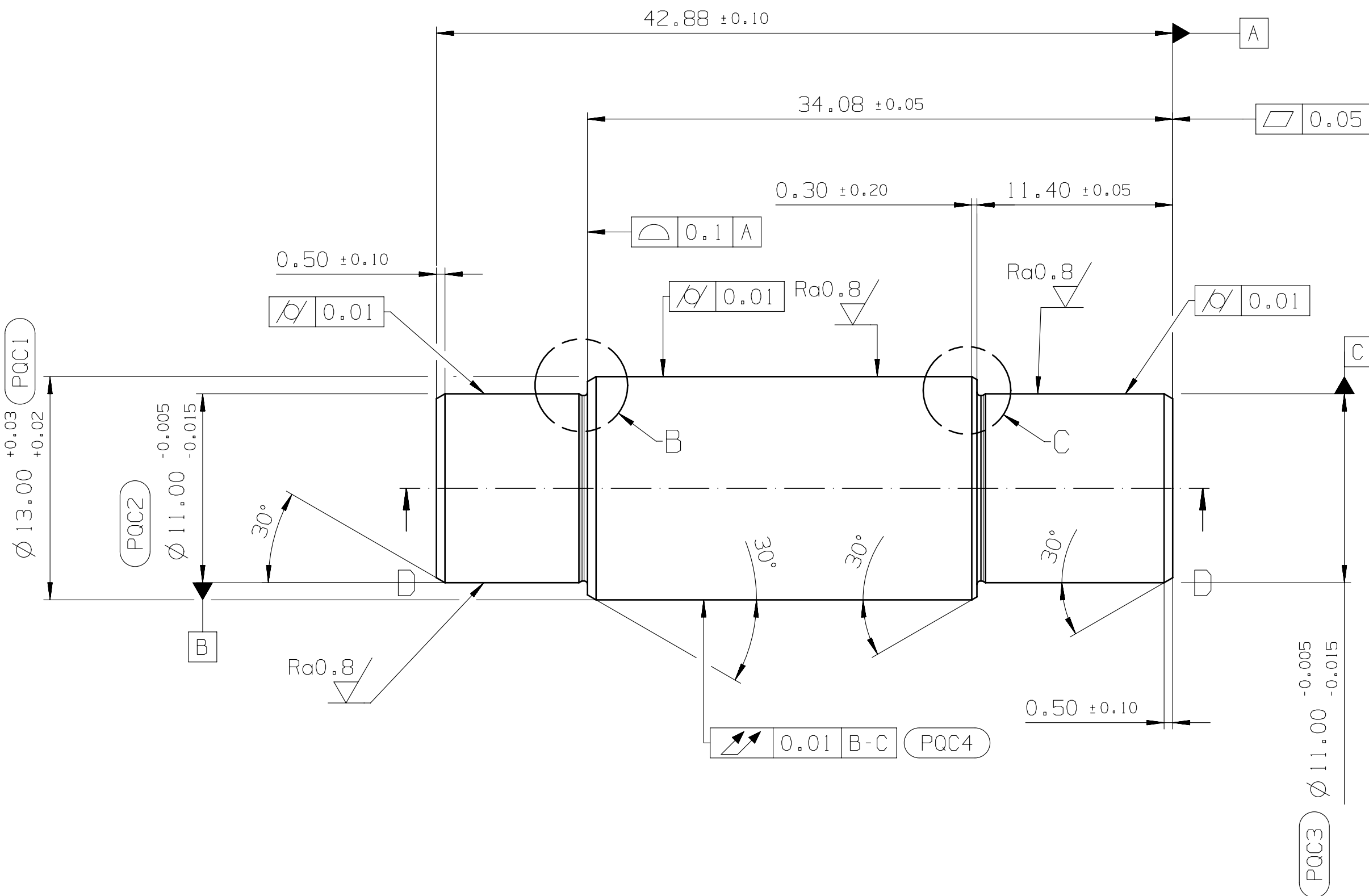
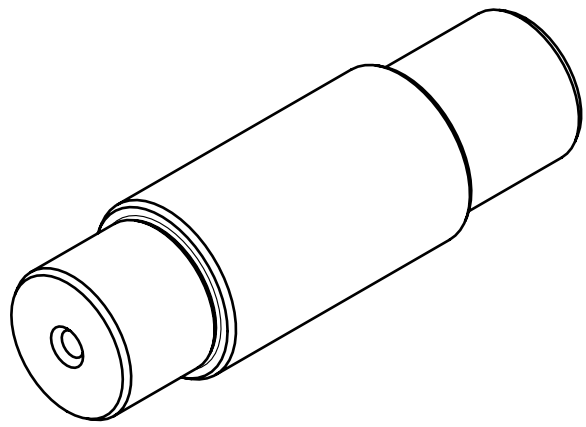




合肥恒信动力科技股份有限公司

Hefei Hengxin Powertrain Technology Co.,Ltd



SECTION D-D

KEY CHARACTERISTIC(关键特性)

LAST NUMBER USED (最后使用序号)				KPC (KEY PRODUCT CHARACTERISTIC) (关键产品特性)	
0	4	0	0	PQC (PRODUCT QUALITY CHARACTERISTIC) (产品质量特性)	
0	4	0	0	AQC (ATTRIBUTE QUALITY CHARACTERISTIC) (属性质量特性)	
TOTAL BY COLUMN (总数量)				DR (DOCUMENTATION REQUIRED) (特性记录控制特性)	
KPC #	PQC #	AQC #	DR #	CHARACTERISTIC (特性描述)	
KPC NO.	PQC NO.	AQC NO.	DR NO.	RATIONALE (失效描述)	
				ZONE (区域)	

DWG STATUS 图样状态					REVISION 更改描述		EWO编号	ENG 工程师
DATA 日期	ST 审核	REV 版本	PDS 验证	PDI 审核				
29JUL20	PB1	001			INITIAL RELEASE			
05JUN21	B	01		NA	RELEASE FOR BETA1			
18FEB22	C	01		NA	RELEASE FOR GAMMA			
20DEC23	C	01	001	C8	0.1	B-C 改为 0.01 B-C	EWO-0418	LJ.Hu
2024.1.2	C	02		NA	材料由20CrMnTi H更改为20CrMnTi		EWO-0474	LJ.Hu
2024.4.15	D	01		NA	图号由16050405改为16050405-1 供应商有起兴改为联泰		EWO-0542	LJ.Hu

MATERIAL : 20CrMnTi GB/T 3077-2015

HEAT TREATMENT: CARBURIZE, QUENCH, TEMPER
EFFECTIVE CASE DEPTH 0.3-0.5mm
SURFACE HARDNESS : HRC 57-61
CORE HARDNESS HRC 30-43

SCALE: 4X

MAX MAGNETIC FIELD ALLOWABLE: 5 GAUSS

CLEANLINESS MUST CONFORM TO GMW16037 0.05mg MAX
PER PC 10 MICRON FILTER PAPER

RESTRICTED & REPORTABLE SUBSTANCES PER GMW 3059

PARTS AS DELIVERED TO ASSEMBLY
SHALL BE CLEAN AND FREE OF DEBRIS, RESIDUAL
ABRASIVE MATERIAL AND CORROSION PRODUCTS
ADVERSELY AFFECTING FUNCTION OR APPEARANCE.

UNDEFINED DIMENSIONS 0.4 A B C

TOLERANCES ON ANGULAR DIMENSIONS TO BE ±3°

PART MUST BE FREE OF BURRS AND SHARP EDGES

MACHINING RADIUS: R0.8±0.3

PARTS MUST WITHSTAND 100° F & 100% RH FOR 60
DAYS SHIPPING&INVENTORY
WITH NO RUST.



上海启盛汽车技术中心
Shanghai Keyson Automotive Technical Center

SCALE 比例	REFERENCE 参考		DATA 日期
4:1	设计	胡刘佳	2024/4/15
MATERIAL 材料牌号	校对	秦亮亮	2024/4/15
	会签	张栋、王千禧	2024/4/15
MATERIAL SPEC材料标准	审核	徐晓锋	2024/4/15
GB/T 3077-2015	批准	俞黎明	2024/4/15

16050405-1

DRAWING NAME 零件名

Driven Shaft

SIZE 图幅	DRAWING NUMBER 图号	DWG STATUS 图样状态			SHREET NUMBER 页码	
		ST 审核	REV 版本	PDI 审核		
A1	Z16050405-1	D	01	NA	1	OF 1

1		1	Z16050405-1	D	02	NA		从动轴	20CrMnTi
No. 编号	ZONE 区域	QUANTITY 数量	PART NUMBER 零件编号	ST 阶段	REV LVL 版本号	PDI 标识	CALC MASS 零件重量 (kg)	PART NAME 零件名称	Material 材料