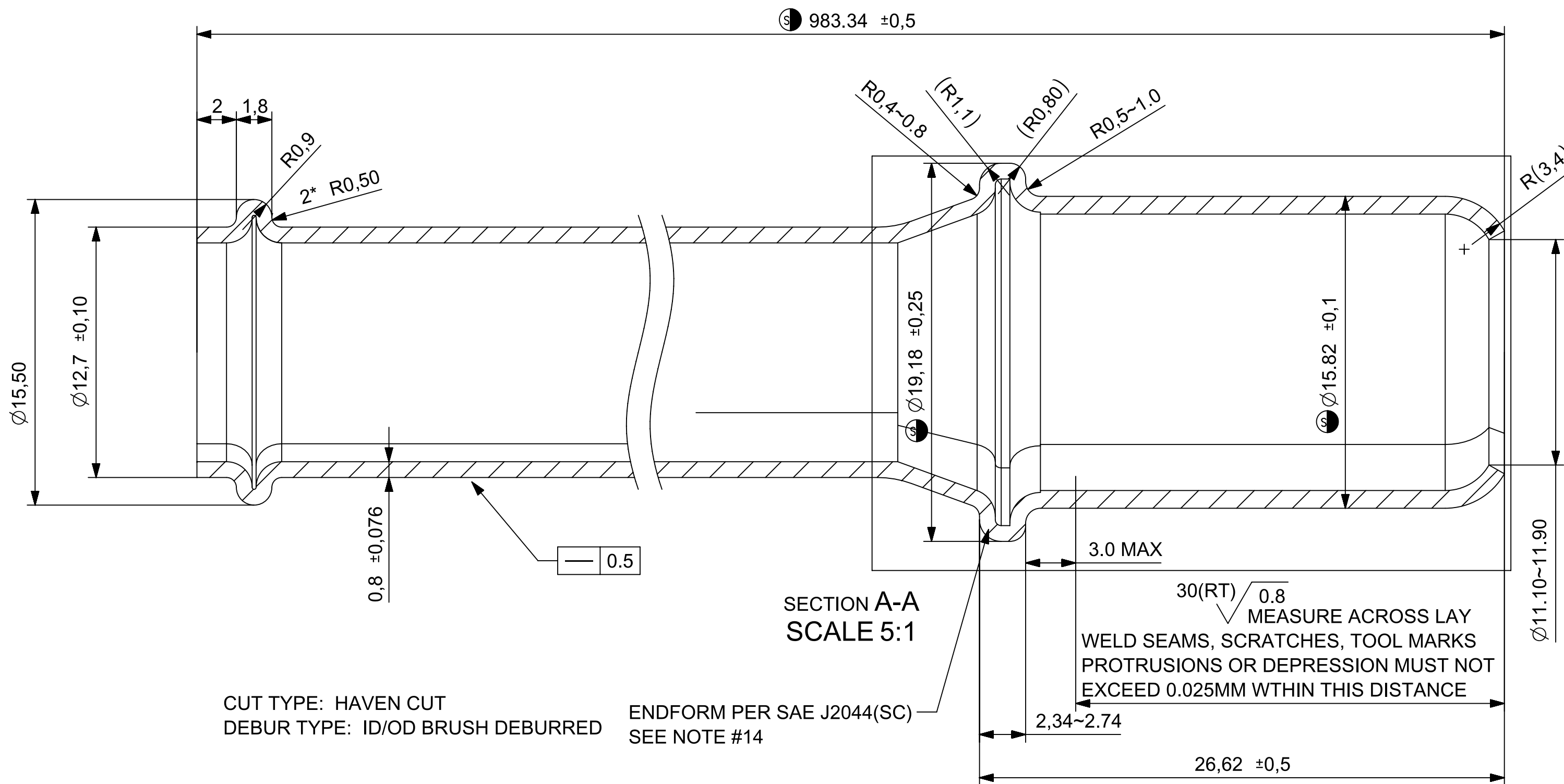
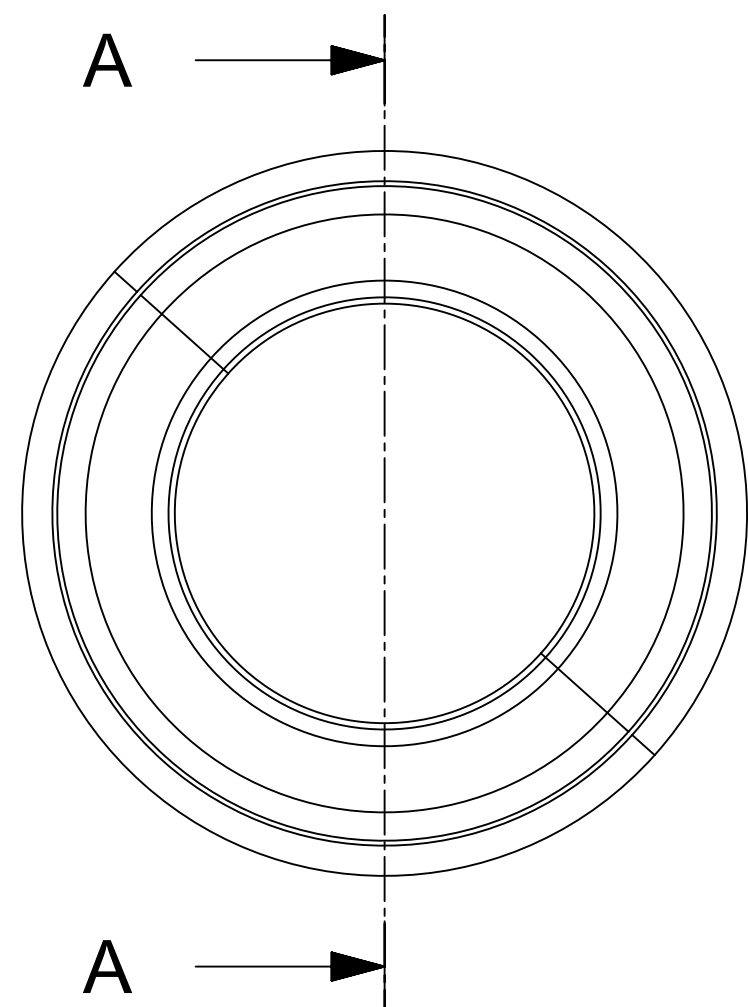


REVISION HISTORY						
REV.	VER.	CCN#	DESCRIPTION	DATE	DES.	ENG.
A	--	16-0109	INITIAL DATA	01/13/16	PL	ZS
			LENGTH CHANGE, QC SIZE CHANGE	08/08/16	PL	ZS



CUT TYPE: HAVEN CUT
 DEBUR TYPE: ID/OD BRUSH DEBURRED
 ENDFORM PER SAE J2044(SC)
 SEE NOTE #14

NOTES: UNLESS OTHERWISE SPECIFIED

- 1) TUBE MATERIAL:
 SAE J405 SUS 304L OR ASTM A 269
 OD: 12.7 ± 0.1
 T: 0.8 ± 0.076
- 2) MATERIAL SPECIFICATION AND DIMENSIONS ARE TO BE SATISFIED IN ADDITION TO ANY FLASH CONTROL REQUIREMENTS SPECIFIED DURING THE PRODUCT DEVELOPMENT PROCESS
- 3) ALL TESTING IS REQUIRED IN ACCORDANCE TO MATERIAL SPECIFICATION IN NOTE #1 AND IS REQUIRED TO BE SUBMITTALS.
- 4) TUBE MATERIAL SUPPLIED MUST COMPLY WITH MATERIAL SPECIFICATION IN NOTE #1 IN ITS ENTIRETY UNLESS OTHERWISE SPECIFIED AND APPROVED BY STANT.
- 5) ANY CHANGES IN THE TUBE MILL SUPPLIER, RAW MATERIAL SUPPLIER, OR PROCESSING OF THE TUBE MUST BE APPROVED BY ENGINEERING PRIOR TO IMPLEMENTATION WITH THE USE OF SREA PER STANT SUPPLIER MANUAL AND REQUIRES A NEW PPAP APPROVAL.

- 6) REMOVE ALL BURRS AND SHARP EDGES FROM EDGES OF PART
- 7) TUBE AND INNER DIAMETER OF TUBE MUST BE FREE OF RUST, EXCESSIVE OIL, BURRS, DEBRIS GREASE, AND/OR ANY OTHER FOREIGN MATERIALS AND MUST BE PROTECTED FROM SUCH DURING SHIPPING AND HANDLING.
- 8) ITEMS MARKED (CC) ARE CRITICAL CHARACTERISTICS. ITEMS MARKED (SC) ARE SIGNIFICANT CHARACTERISTICS. THESE ITEMS REQUIRE SPC VERIFICATION BY THE SUPPLIER IN ACCORDANCE WITH SEI SUPPLIER MANUAL.
- 9) FLASH CONTROLLED TO 0.13 MAX
- 10) WELD SEAM CONDITION: NON-REMETALIZED
- 11) OD OF WELD SEAM TO BE SMOOTH TO CONTOUR OF TUBE.
- 12) PARTS SUPPLIED TO SEI MUST BE HEXAVALENT CHROMIUM FREE.
- 13) SUPPLIERS MUST CONFORM TO ALL REQUIREMENTS IN THE STANT SUPPLIER MANUAL
- 14) RECIRC TUBE QUICKCONNECT MUST MEET REQUIREMENTS OF SPECIFICATION SAE J2044
- 15) NO CRACKS AND ANY OTHER ISSUE HAPPEND WHEN BENDING

UNLESS OTHERWISE SPECIFIED TOLERANCES WILL BE AS LISTED DIMENSIONS: ± 0.25 ANGLES: ± 0°30'	CONFIDENTIAL THIS DRAWING MAY NOT BE REPRODUCED WITHOUT PRIOR WRITTEN APPROVAL	DO NOT SCALE THIS PRINT		
		CUSTOMER NO.:	REFERENCE NO.:	
SYMBOL DEFINITIONS - CRITICAL CHARACTERISTIC - SIGNIFICANT CHARACTERISTIC		UNITS: MM	RELEASE DATE: 01/13/16	PART NAME: RAW VENT TUBE
THIRD ANGLE PROJECTION 		DESIGNER: PL	ENGINEER: ZS	SIZE: PART NO.: A2 TUX-0467
DRAWING CONFORMS TO ASME Y14.5M-1994		SCALE: 1:1	SHEET: 1 OF 1	Copyright © 2009