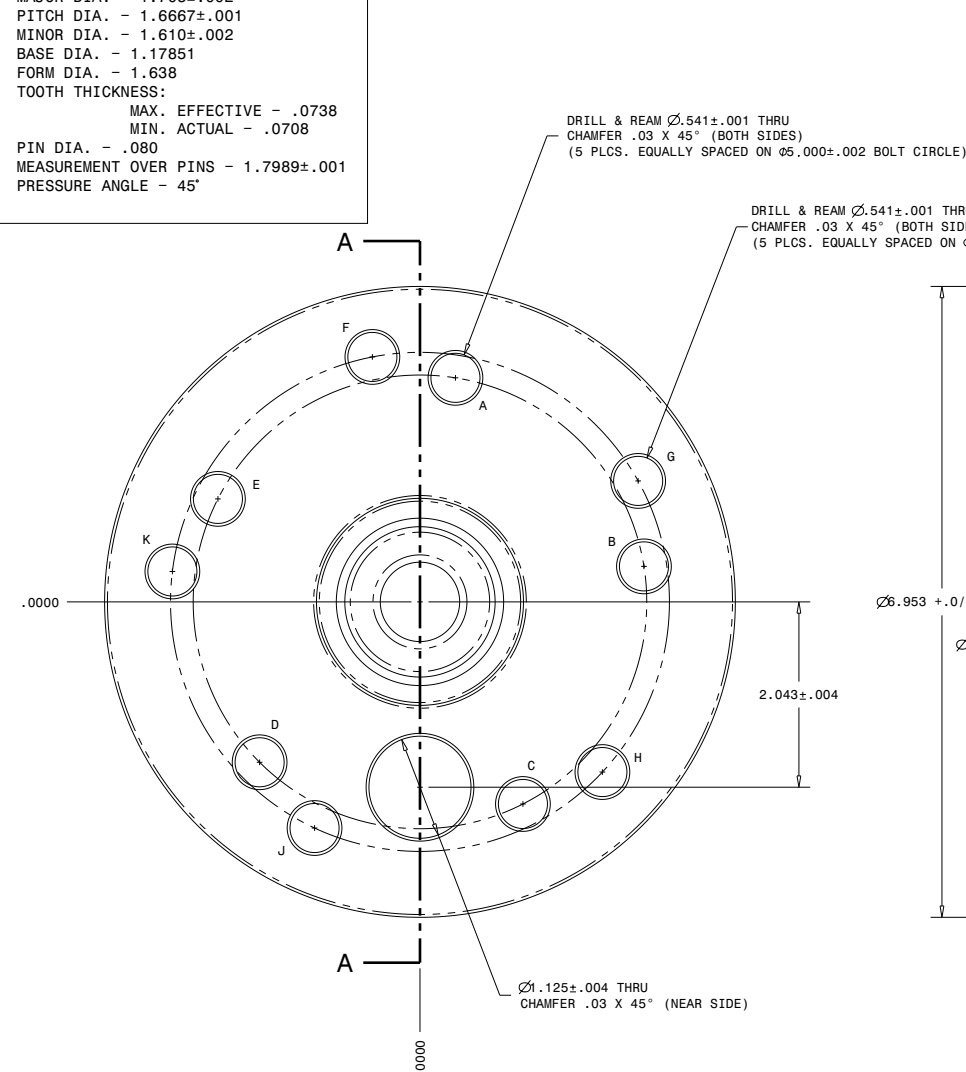


NO. OF TEETH = 40
PITCH = 24/48
MAJOR DIA. = 1.708±.002
PITCH DIA. = 1.6667±.001
MINOR DIA. = 1.610±.002
BASE DIA. = 1.17851
FORM DIA. = 1.638
TOOTH THICKNESS:
MAX. EFFECTIVE = .0738
MIN. ACTUAL = .0708
PIN DIA. = .080
MEASUREMENT OVER PINS = 1.7989±.001
PRESSURE ANGLE = 45°

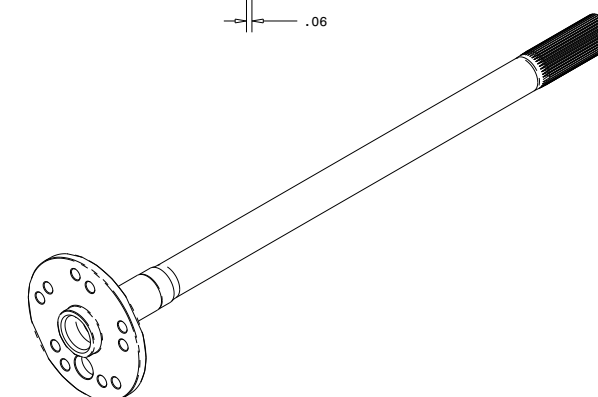
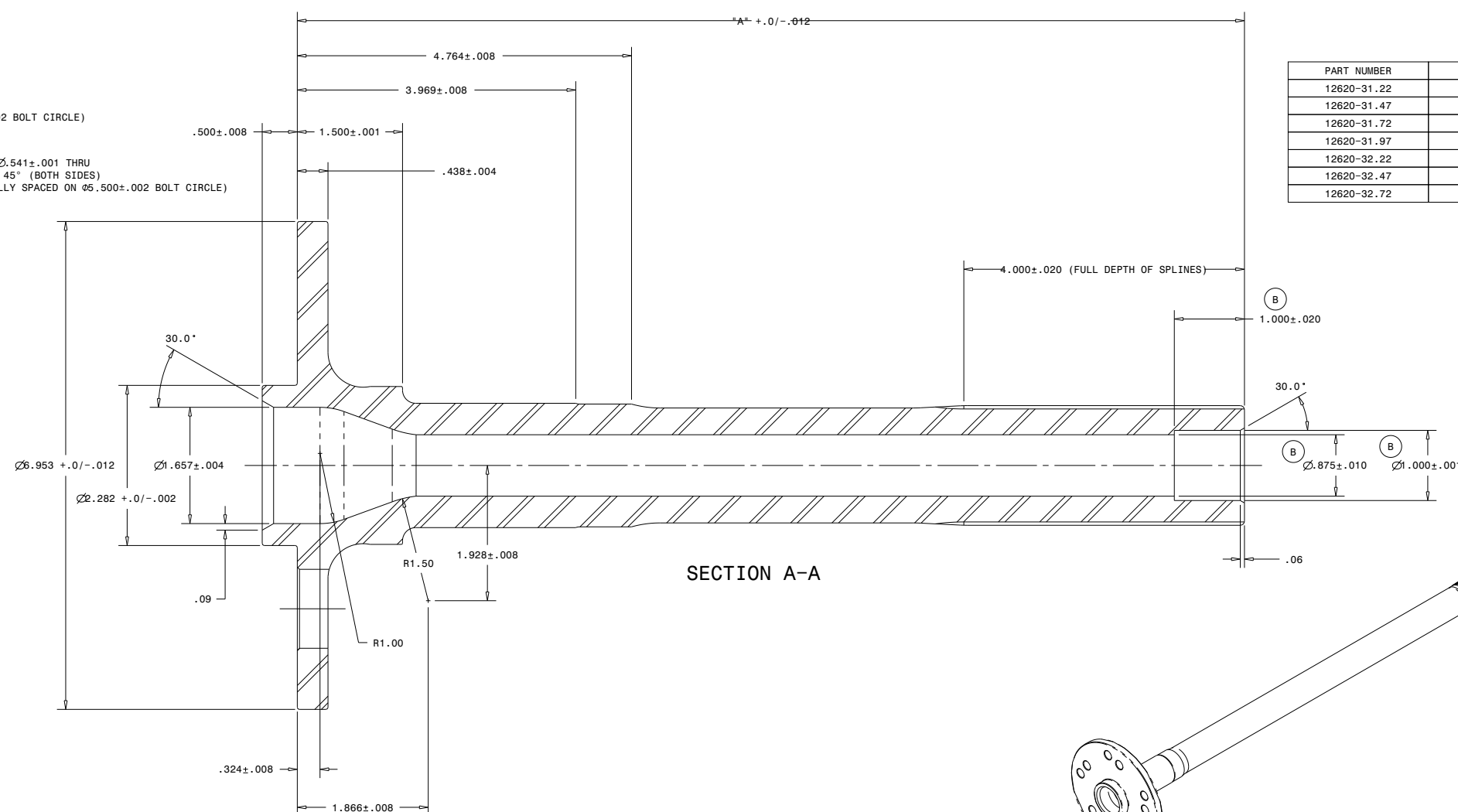
R E V I S I O N S			
ISSUE	CHANGE	DATE	BY
A	RELEASED	6/5/14	R.J.G.
B	ADDED 1.000 C'BORE	6/24/14	R.J.G.

PART NUMBER	"A" LENGTH
12620-31.22	31.22
12620-31.47	31.47
12620-31.72	31.72
12620-31.97	31.97
12620-32.22	32.22
12620-32.47	32.47
12620-32.72	32.72



	X - DIMENSION	Y - DIMENSION
A	.391	2.469
B	2.469	.391
C	1.135	-2.228
D	-1.768	-1.768
E	-2.228	1.135
F	-.525	2.699
G	2.405	1.333
H	2.011	-1.875
J	-1.162	-2.492
K	-2.730	.335

SECTION A-A



NOTES:

- NOTES:
1. MATERIAL TO BE FORGED COLD FINISH FINE GRAIN 4340/4140 (OR EQUIVALENT) STEEL
 2. MINIMUM MATERIAL STRENGTH TO BE 201,000 PSI TENSILE, 180,000 PSI YIELD
 3. SUBSTITUTION OF MATERIAL IS PERMISSIBLE PROVIDING MINIMUM STRENGTH REQUIREMENTS ARE ACHIEVED
 4. STRAIGHTEN FORINGS TO .001 R MAXIMUM PRIOR TO MACHINING
 5. SHOT BLAST FORINGS PRIOR TO MACHINING TO STRESS RELIEVE AND CLEAN
 6. CNC MACHINE ALL OVER, .63 MICROINCHES [1.6 MICROMETERS] UNLESS OTHERWISE NOTED
 7. REMOVE SHARP EDGES .01 X 45°
 8. DEBURR SPLINES PRIOR TO HEAT TREAT
 9. HEAT TREAT HRC 42-47 THRU, PARTS MUST BE HUNG DURING HEAT TREAT
 10. STRAIGHTEN TO WITHIN RUNOUT SHOWN ON AXLE INSPECTION BETWEEN CENTERS
 11. PARTS MUST BE FREE OF OXIDATION AND SCALE
 12. PARTS MUST BE COATED IN OIL TO PREVENT RUST AND CORROSION
 13. SPLINES MUST BE CAPPED TO PREVENT DAMAGE DURING SHIPPING
 14. PARTS MUST BE PACKAGED SECURELY TO PREVENT DAMAGE DURING SHIPPING

NOTICE
THIS PRINT IS FOR QUOTING
PURPOSES ONLY.
A RELEASED PRINT WILL BE
SENT WITH AN ORDER

PART MUST BE PARALLEL, PERPENDICULAR, AND CONCENTRIC WITHIN .002 T.I.R. U.O.N.									
ALL DIMENSIONS APPLICABLE AT 68 °F/20 °C DIMENSIONAL TOLERANCE U.O.N.			FLANGED AXLE (W60)						
FRACTION	DECIMAL	ANGULAR							
±1/64	±.001	±30 SEC.							
LAYOUT #		SCALE	DRAWING		DATE	SIZE	DRAWING NUMBER	ISSUE	
12620-XX.DWG		FULL	R.J. GROSS		6/5/14	D	12620-XX	B	