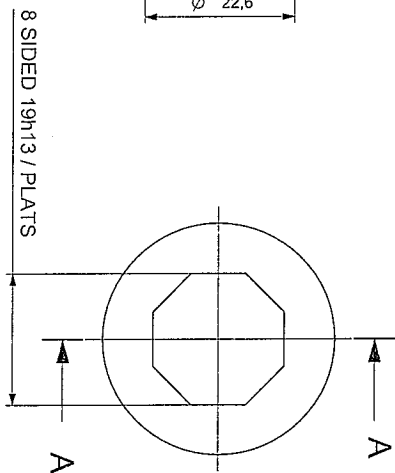


A technical drawing of a bolt, showing a hexagonal head at the top and a threaded shank below it. The shank has two circular holes, one on each side, and a wider, unthreaded section at the bottom.

Technical drawing of a mechanical part, likely a valve or fitting, showing a cross-section. The drawing includes dimensions for diameters (e.g., 35, 30 ± 0.1, 27 ± 0.1, 21, 21.1 ± 0.1, 14, 22.6, 14, 8 ± 0.1, 3 ± 0.1, 8, 24, 64, 55, 3), radii (R7), and lengths (4, 14, 14, 3.5, 24, 64, 55, 3). A detail view 'DETAIL B' is shown, highlighting the angles of the part. The text 'ROUND OFF THE ANGLES (VALID FOR THE TWO GR)' is present.

- ROUND OFF THE ANGLES BY RADIUS OF 0.1 AT 0.2 MAX (VALID FOR THE TWO GROOVES),



8 SIDED 19h13 / PLATS

Technical drawing of a mechanical part, likely a valve or plug, showing a cross-section. The part is circular with a central vertical section. Dimensions include a total height of 17.3, a central section height of 15, and a 45-degree chamfer. A handwritten note indicates a diameter of Ø18.6.

PRELIMINARY
FOR REVIEW ONLY
REF DRAWING
XFL-216 Oil Cooler Module - Central Screw
1-30-14


材料: EN1706AC-46000DF,
NF-A57-220.

XXX

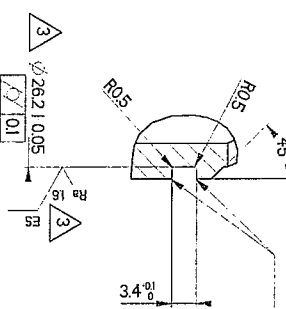
(NX 8.0) C SIZE 96ET

REFERENCE :

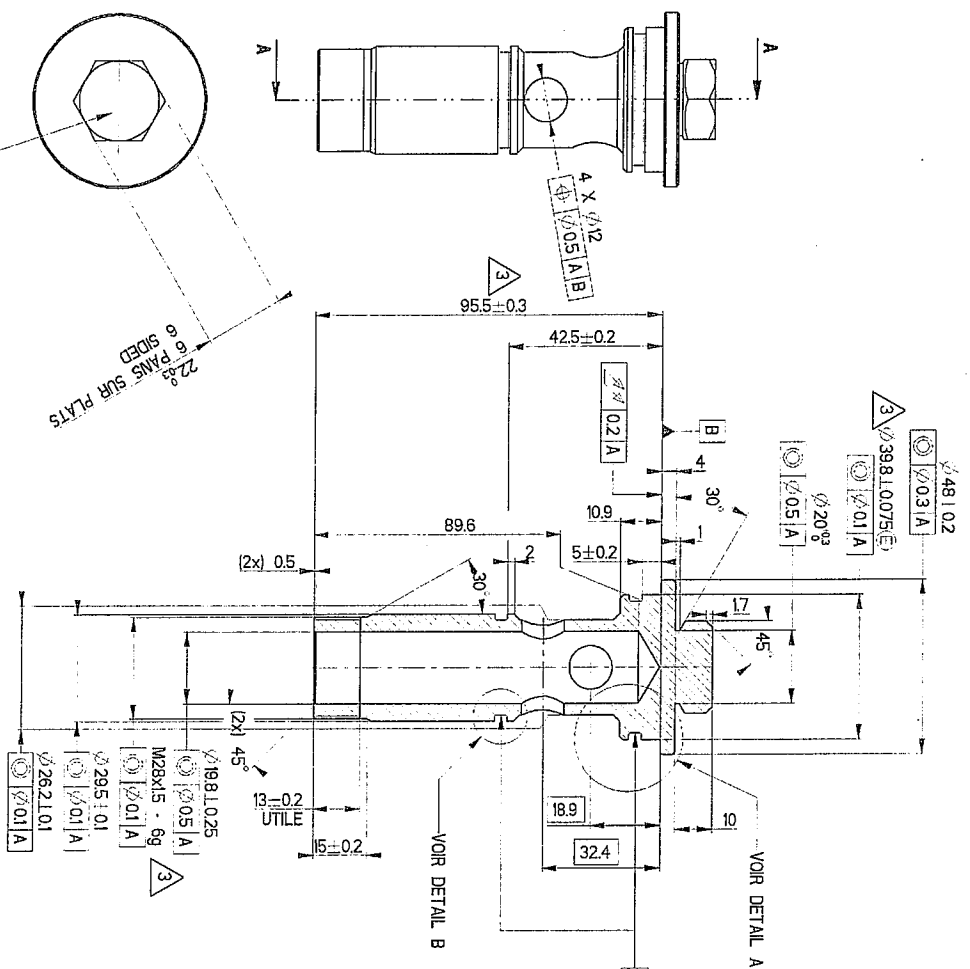
COUPE A-A

DETAIL A
ECHELLE 2.000
 $\varnothing 36,21 \pm 0,05$ 

chs 0.5 x 45°



-Casser les angles par rayons de 0.1 a 0.2 maxi
Round off the angles by radius of 0.1 at 0.2 maxi.



Definition du six pans suivant DIN 475
Hexagonal definition following DIN 475

Piece livree sans bavures ni copeaux detachables
part delivered without bars and detachable shaving

PROTECTION : Zinc blanc 5 a 10 μ m sans cr6

PROTECTION: white zinc 5 to 10 μ m without cr6

REQUIREMENTS (i.e., after 100 hours of solo study, no trace of first (which

après 200 heures de brouillard salin, corrosion sur 5% de la pièce (aucune trace de rouille rouge)

after 200 hours of salt spray, corrosion on 5% of the panel (no trace of red rust)



Sujant
QIN-04-38

PROPRETE SUIVANT QND-04-55 / CLEANLINESS FOLLOWING QND-04-55

Categorie / Class: 0

Type de fluide / Sort of fluid Huile / Oil

Surface totale / Total surface: X dm²

[illegible]

+	5	ANGLES
-		ANGLES
Re,	✓	

PLANCHE / SHEET

1	2	3	4	5	6	7	8	9	10	11	12	13	14	15	16	17	18	19	20	21	22	23	24	25	26	27	28	29	30	31	32	33	34	35	36	37	38	39	40	41	42	43	44	45	46	47	48	49	50	51	52	53	54	55	56	57	58	59	60	61	62	63	64	65	66	67	68	69	70	71	72	73	74	75	76	77	78	79	80	81	82	83	84	85	86	87	88	89	90	91	92	93	94	95	96	97	98	99	100
---	---	---	---	---	---	---	---	---	----	----	----	----	----	----	----	----	----	----	----	----	----	----	----	----	----	----	----	----	----	----	----	----	----	----	----	----	----	----	----	----	----	----	----	----	----	----	----	----	----	----	----	----	----	----	----	----	----	----	----	----	----	----	----	----	----	----	----	----	----	----	----	----	----	----	----	----	----	----	----	----	----	----	----	----	----	----	----	----	----	----	----	----	----	----	----	----	----	----	-----

<p> NOTES / NOTES </p>

VOLUME / VOLUME
mm³

46007

1